



Original Research Article

A three dimensional finite element analysis of fiber post and dentin post in permanent maxillary central incisors: An in-vitro study

Naveen Kumar Ramagoni¹, Shakir Mekkalayil Kuniyil¹, Vinod Kumar^{1,*}, Aleena Babu¹, Anisha Nanda¹

¹Dept. of Pedodontics, Navodaya Dental College, Raichur, Karnataka, India



ARTICLE INFO

Article history:

Received 13-12-2020

Accepted 02-01-2021

Available online 21-04-2021

Keywords:

FEM

Dentin post

Fiber post

ABSTRACT

Background: Endodontically treated teeth are generally weakened as a result of loss of tooth structure due to decay, previous restorative procedures and endodontic access preparation. Ideal coronal reconstruction of endodontically treated tooth is still a challenge for restorative dentistry. Post and core system is a widely used method for treatment of structurally weakened teeth.

Materials and Methods: Two extracted, caries-free maxillary central incisors with straight root canal were collected and mounted. Post space preparation were done and restored with fiber post and dentin post respectively. The model is simulated using the software “Creo” and this data is then transferred to software “Hypermesh” to create a Finite Element model i.e., a mesh of nodes and elements. This mesh is programmed to contain the material properties which defined how the structure will react to loading conditions at different angles. The Analysis is carried out using the Ansys software.

Results: The FEA results showed that the Dentin post have better fracture resistance.

Conclusion: The comparison between fiber and dentin posts exhibited a better stress resistance of dentin post over fiber post. Further research in this regard is required to support the findings of this study results.

© This is an open access article distributed under the terms of the Creative Commons Attribution License (<https://creativecommons.org/licenses/by/4.0/>) which permits unrestricted use, distribution, and reproduction in any medium, provided the original author and source are credited.

1. Introduction

Endodontically treated teeth are generally weakened as a result of loss of tooth structure due to decay, previous restorative procedures and endodontic access preparation. Further destruction of these teeth can be prevented by a protective restoration. Post and core system is a widely used method for treatment of structurally weakened teeth. The primary objective of post and core procedure is replacement of the lost tooth structure in order to facilitate crown support and retention.¹ Numbers of different materials have been used for the manufacturing of dental posts. Metal alloys have been the chosen material for years. The main disadvantage of these structures was the concentrated stresses in zones that are vital to the tooth root. Many authors believe that the use of any dental post with a Young's

modulus higher than the dentin can create stresses at cement interfaces and can cause the separation of the post or a root fracture.²

Prefabricated fiber posts embedded in a resin matrix have been suggested as a promising restorative material that presents appropriate esthetics and biocompatibility. These posts are easy to use and show an elastic modulus similar to human dentin, which favors stress distribution along the root axis.³ Ideally, the post material should have a physical property such as modulus of elasticity, compressive strength, and thermal expansion, as well as esthetics similar to those of dentin, and it should bond predictably to root dentin. However, the only material that can substantiate all these properties can be none other than dentin itself. A few reported cases using dentin as post material have shown successful outcomes. Hence, a thorough investigation should be carried out for the probability of human dentin to serve as a post material.⁴

* Corresponding author.

E-mail address: dr.vinod990@gmail.com (V. Kumar).

The finite element method (FEM) is based on a mathematical model, which approximates the geometry, loading and constraint conditions of a structure to be analyzed. Deformations and stresses at any point within the model can be evaluated and highly stressed regions can be analyzed. The elastic modulus and the Poisson's ratio for the modeled materials are specified for each element. A system of simultaneous equations is generated and solved to yield predictable stress distribution in each throughout a structure.⁵

The present study was conducted to compare the efficacy of fiber post and dentin post using FEM analysis

2. Materials and Methods

Three-dimensional models of maxillary central incisors were created by using the software "Creo⁶ version 2.0". The shape and dimensions used to model the tooth were obtained from Wheeler's dental anatomy, physiology, and occlusion.⁷ The model included cancellous bone, periodontal ligament, cementum, Gutta-percha, dentin, post and core, crown) and each area were color coded (Cancellous bone – Pink, PDL -Yellow, Cementum-Blue, Gutta percha-Purple, Dentin- Red, Post and core – Cream, Crown – White) (Fig.1).

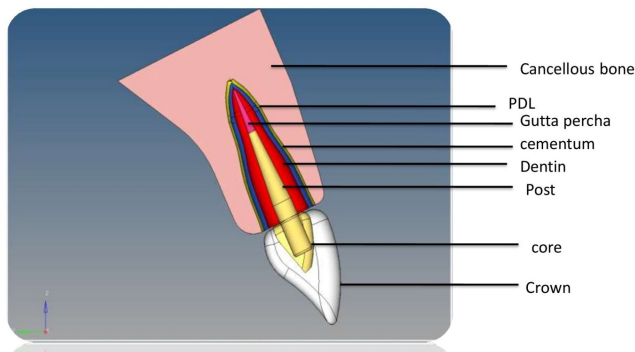


Fig. 1: Cross section of completed model (Cancellous bone – Pink, PDL -Yellow, Cementum-Blue, Gutta percha-Purple, Dentin- Red, Post and core – Cream, Crown – White)

The model I represent a pulpless tooth, with 5 mm of remaining Gutta-percha apical seal, restored with a fiber post. The model II represented the same tooth structure, but with dentin post.

The models then transferred to the software "Hypermesh (1) version 11.0" for the process of meshing. Meshing divides the entire model into smaller nodes and elements which make a grid called "mesh" (Figure 2).

The mesh acts like a spider web, in that, from each node there extends a mesh element to each of the adjacent nodes. The basic theme is to make calculations at only limited (finite) number of points and then interpolate the results for the entire domain (surface or volume). This

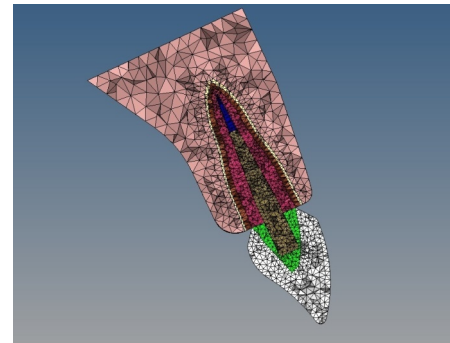


Fig. 2: Cross section of the model after meshing

mesh is programmed to contain the material properties (elastic modulus, Poisson's ratio), which define how the structure will react to the loading conditions, i.e., with the incorporation of material properties the structure simulates the available natural product.

2.1. Material properties

The elastic modulus and the Poisson's ratio of the materials involved in the finite element analysis are described in Table 1.

Table 1: Materials properties used in the study

Material	Young's modulus	Poisson ratio	
Spongy bone	1.31	0.30	4
PDL	68.9	0.45	4
Cementum	15.5	0.31	12
Dentin	18.6	0.31	4
Gutta Percha	1.4×10^{-1}	0.45	1
Fiber post	45	0.25	4
Dentin Post	18.6	0.31	4
Composite resin	19.16	0.26	4

To simulate masticatory load, specified load of 270N⁸ were applied at three different angulations, i.e., 00, 45, 90 on both the models (Figure 3 a, b).

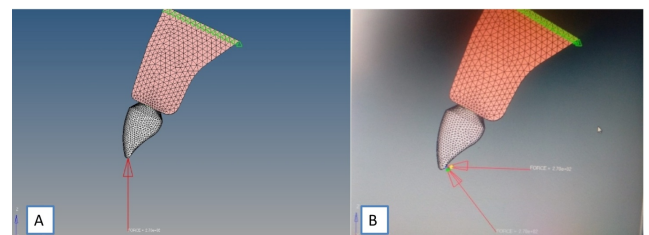


Fig. 3: A) Angulations of force application at 0 degree; B) Angulations of force application at 45 degree and 90 degree

The analysis was carried out using the software "Ansys¹ Version 19.0".

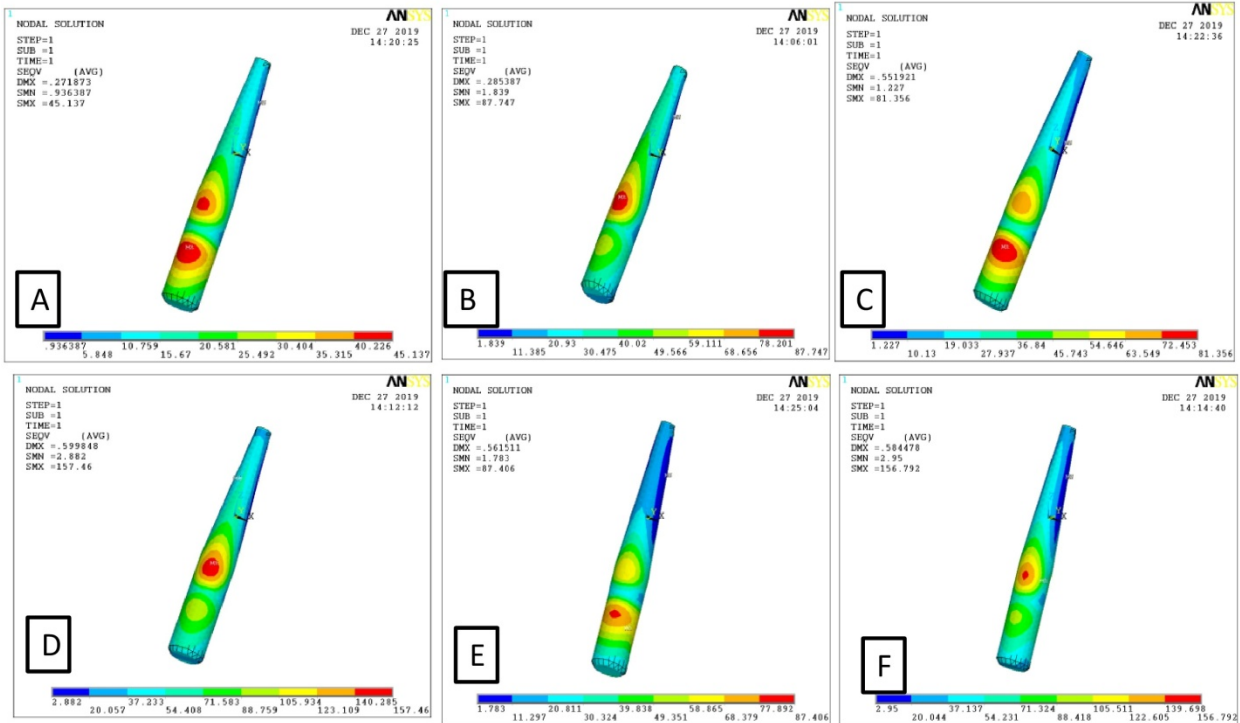


Fig. 4: A) Maximum stress at 00 degree angulation on dentin post; B): Maximum stress at 00 degree angulation on fiber post; C): Maximum stress at 45 degree angulation on dentin post; D): Maximum stress at 45 degree angulation on fiber post; E): Maximum stress at 90 degree angulation on dentin post; F): Maximum stress at 90 degree angulation on fiber post

3. Results

Results were presented by considering von Misses criteria.⁹ The stresses were visualized in color coding ranging from dark blue (minimum stress) to red (maximum stress) in the models. All the stress values were showed in Megapascals (MPa) (Figure 4 a-f).

At 00 degree angulation, the highest stress distribution observed for dentin post were 45 Mpa whereas for the fiber post it was recorded as 87 Mpa. When the forces delivered at the 45 degree angulation, the highest distribution of stress observed for dentin post was 81 MPa whereas for fiber post it was 157 MPa. The third angulation through which the force was applied was 90 degree and the highest stress distribution of dentin post was 87Mpa and for fiber post it was 186 degree. At all angles dentin post had showcased less stress distribution than the fiber post.

The area of stress concentration for each post was constant at different angulations,ie, for dentin post, the area of highest stress concentration was seen at the cervical third of the post-dentin interface at all angles and for the fiber post, the area of highest stress concentration was noticed on the middle third of the post- dentin interface.

Maximum stresses created on both the posts at various angles are summarized in Table 2.

Table 2: Maximum stresses created on both the posts at various angles

	Dentin post (MPa)	Fiber post (MPa)
At 00 degree	45	87
At 45 degree	81	157
At 90 degree	87	186

4. Discussion

Dentin has a complex microstructure and simulation of its biomechanical properties remains a challenge. Some researchers have used human teeth for the fabrication of an intracanal retainer, referred to as a “dentin post”. Recent studies have suggested that a dentin post enhances stability and adhesion, which reduces the risk of fracture of endodontically treated teeth.³ The dentin post (Figure 5 a) can be prepared from extracted premolar or canine. After ensuring all the bio security standards the crown portion of the tooth selected for dentin post preparation was separated from the root using a diamond disk (Figure 5 b) and then the tooth was sectioned bucco-lingually along the long axis (Figure 5 c-e).

The direct wax impression of the post space served as a guide to prepare the post in the appropriate shape and dimension. The adhesion among the “Biological Post,” the

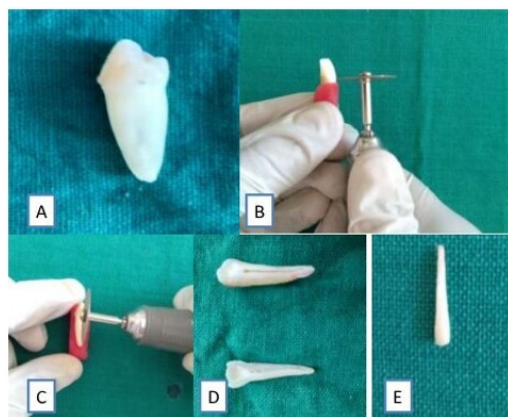


Fig. 5: A): Extracted premolar to be used as dentin post; B): crown portion was separated from the root using diamond disc; C): sectioning of the tooth bucco-lingually D): After sectioning E): Dentin post

cementing agent, and the dental structure allows one to attain a sole biomechanical system – MONOBLOCK, with materials that are compatible among themselves.^{10,11}

The result of this study is in contrast with study done by Henrique et al³ in 2016 where the results concluded as the fiber and dentin posts exhibited similar stress values and distribution. Another study carried out by Memon et al.⁴ in 2016 where they compared glass fiber post and dentin post shows that the, the stress in the cervical area of the dentin was more for fiber post when Compared to dentin post which comes in accordance with the present study. To ensure bio security standards, the donor was subjected to a thorough review of medical history and routine blood investigations before the initiation of the procedure. While preparing the dentin post, the extracted tooth was properly cleaned, stored, and Sterilized by autoclaving at 121°C for 15 minutes.¹⁰

5. Conclusion

The present study shows that the dentin post displays a lesser amount of stress distribution under loading condition at various angles compared to fiber post which further needs to be confirmed through more in-vitro that incorporates various other intra canal posts in comparison with dentin post as well as through in vivo studies.

6. Source of Funding

This research funded by Navodaya Dental College, Raichur for the Research Project titled “Urease Activity In Caries Free and Caries Active Children” –Proj. Code-D004 for the Academic year 2018-19.

7. Conflict of Interest

None.

8. Acknowledgement

I would like to express my sincere gratitude to my teachers and colleagues at Department of pedodontics and Preventive Dentistry, navodaya Dental College, Raichur, Karnataka. My Special thanks to management, Principal Navodaya dental college, Raichur. I express my gratitude to my juniors and seniors for their constant support.

References

1. Kumar P, Rao RN. Three-dimensional finite element analysis of stress distribution in a tooth restored with metal and fiber posts of varying diameters: An in-vitro study. *J Conserv Dent*. 2015;18:100–4.
2. Machado J, Almeida P, Fernandes S, Marques A, Vaz M. Currently used systems of dental posts for endodontic treatment. *Procedia Struct Integr*. 2017;5:27–33. doi:10.1016/j.prostr.2017.07.056.
3. Diana HH, Oliveira JS, Ferro MCL, Silva-Sousa YTC, Gomes E. Stress Distribution in Roots Restored with Fiber Posts and An Experimental Dentin Post: 3D-FEA. *Braz Dent J*. 2016;27(2):223–7. doi:10.1590/0103-6440201600666.
4. Memon S, Mehta S, Malik S, Nirmal N, Sharma D, Arora H. Three-dimensional finite element analysis of the stress distribution in the endodontically treated maxillary central incisor by glass fiber post and dentin post. *J Indian Prosthodont Soc*. 2016;16(1):70–4. doi:10.4103/0972-4052.167933.
5. Shetty PP, Meshramkar R, Patil KN, Nadiger RK. A finite element analysis for a comparative evaluation of stress with two commonly used esthetic posts. *Eur J Dent*. 2013;07(04):419–22. doi:10.4103/1305-7456.120668.
6. Mahajan S, Patil R. Optimizing Dental Implant Model by Comparison of Three Dimensional Finite Element. *Int J Innov Res Sci*. 2015;4(11):11223–31.
7. Nelson SJ, Ash MM. Wheeler’s Dental Anatomy Physiology and Occlusion. 9th ed. Missouri (U.S): Saunders; 2011.
8. Subramaniam P, Babu KLG, Ifzah. Evaluation of occlusal forces in different stages of children - An exploratory study. *Saudi J Oral Sci*. 2018;5(1):11. doi:10.4103/sjos.sjoralsci_52_17.
9. Kurowski PM. Finite Element Analysis for Design Engineers. 2nd ed. Warrendale, Pennsylvania, USA: SAE International; 2007.
10. Swarupa CH, Sajjan GS, Bhupathiraju VL, Anwarullah A, Sashikanth YV. Biological dentin post for intra radicular rehabilitation of a fractured anterior tooth. *J Clin Diagn Res*. 2014;8(2):242–3.
11. Ghazawy REL, Badran A. Comparative evaluation of fracture resistance of primary anterior teeth restored with long dentine posts and teeth restored with short fiber posts: An in vitro study. *Future Dent J*. 2018;4(1):54–8. doi:10.1016/j.fdj.2017.11.003.

Author biography

Naveen Kumar Ramagoni, Professor

Shakir Mekkalayil Kuniyil, PG Student

Vinod Kumar, Professor and HOD

Aleena Babu, PG Student

Anisha Nanda, PG Student

Cite this article: Ramagoni NK, Kuniyil SM, Kumar V, Babu A, Nanda A. A three dimensional finite element analysis of fiber post and dentin post in permanent maxillary central incisors: An in-vitro study. *Int J Oral Health Dent* 2021;7(1):29-32.